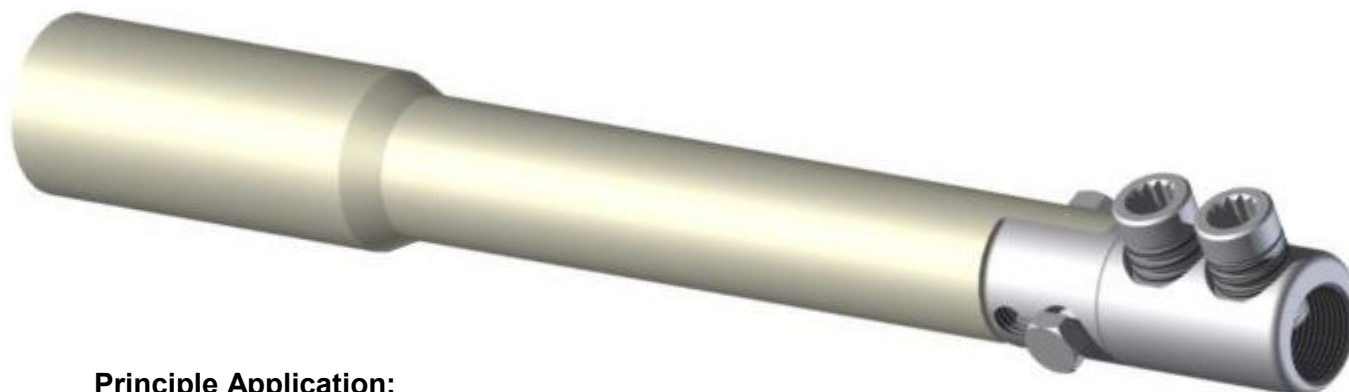


Moisture blocked stop end  
mechanical ferrule for  
medium voltage applications

## MECHANICAL CONNECTORS

### MFS18 Connectors



#### Principle Application:

Stop end jointing of stranded/solid sectoral conductors.

#### Range:

Product Reference	Core C.S.A. (mm <sup>2</sup> )			
	Stranded		Solid	
	Min	Max	Min	Max
MFS18/1	10*	95	10	70
MFS18/2	16	185	16	150
MFS18/3	70	300	70	240
MFS18/4	10*	95	10	70
MFS18/5	16	185	16	150

Note: For jointing other core configurations/sizes please contact Sicame Technical Dept

The 'MFS18' range of mechanical connectors utilises the patented "universal" range taking shear bolts and comes complete with core stripping guides.

Suitable for all cable voltages up to and including 11000 volts.

#### Secondary Application:

Stop end jointing of stranded/solid circular cored conductors.

#### Range:

Product Reference	Core C.S.A. (mm <sup>2</sup> )			
	Stranded		Solid	
	Min	Max	Min	Max
MFS18/1	10*	95	10	185
MFS18/2	16	185	16	300
MFS18/3	70	300	70	400
MFS18/4	10*	95	10	185
MFS18/5	16	185	16	300

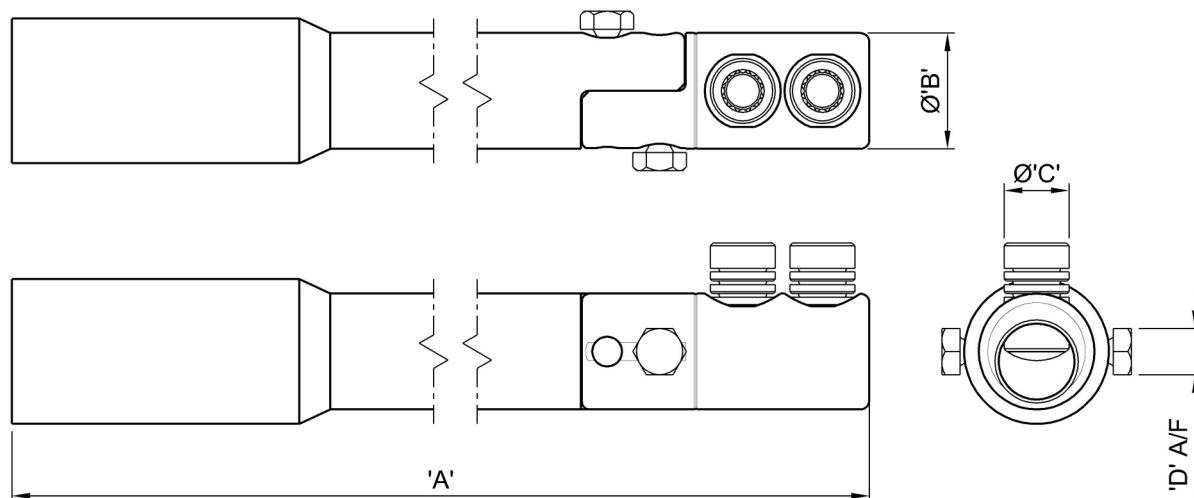
Note: For jointing other core configurations/sizes please contact Sicame Technical Dept

Moisture blocked stop end  
mechanical ferrule for  
medium voltage applications

## MECHANICAL CONNECTORS

### MFS18 Connectors

#### Physical Dimensions



Product Reference	Dimensions (mm)			
	'A'	Ø'B'	Ø'C'	'D' A/F
MFS18/1	337.0	28.0	M16	13mm
MFS18/2	337.0	32.0	M18	13mm
MFS18/3	349.0	37.5	M18	13mm
MFS18/4	382.0	28.0	M16	13mm
MFS18/5	382.0	32.0	M18	13mm

**Material:** Aluminium Alloy / Polyethylene

**Test Specification:** Engineering Recommendation C79 / IEC 1238-1.

#### Fitting instructions:

1. Strip insulation from each core equal to the depth of the bore guide + 5mm.
2. Thoroughly abrade exposed conductor cores. (See note).
3. Place the connector onto the conductor core, tighten the universal shear bolts consecutively one turn at a time until both bolts have sheared, using the correct tightening tool and holding tool.
4. De-burr and clean the connector as appropriate ensuring the profile of the screws are level with the connector body and leaving no sharp edges.

**Note:** When jointing copper conductor, wrap the core with the brass gauze supplied prior to installation.

Conductor cores 10mm<sup>2</sup> and below should be doubled to achieve the necessary cross-sectional area.

**IMPORTANT:** Please note when using the MFS connectors in joints nominally rated in excess of 3.3kV, it is essential that the Jointing System Supplier's instructions for stress relieving and re-insulation techniques are strictly adhered to.

©COPYRIGHT

Sicame UK Ltd operates a continuous product design development and improvement programme and offers active co-operation establishing satisfactory procedures and systems to meet new or unusual jointing situations. The company reserves the right to introduce modifications to the above designs and specifications without prior notice.

**sicame**  
UK